



In January 2024 Aton Resources became the first international company to be issued a gold mining licence in Egypt since 2005, at its Abu Marawat Concession. Aton aim to follow in Centamin’s footsteps at the world-class Sukari mine, by developing Egypt’s second commercial gold mine at Hamama West. The Abu Marawat Exploitation Lease covers an area of 57.66 km<sup>2</sup>, and covers the Hamama and Rodruin deposits

A further 255km<sup>2</sup> of highly prospective ground has been retained for additional exploration, which will be aggressively explored over the next 24 months

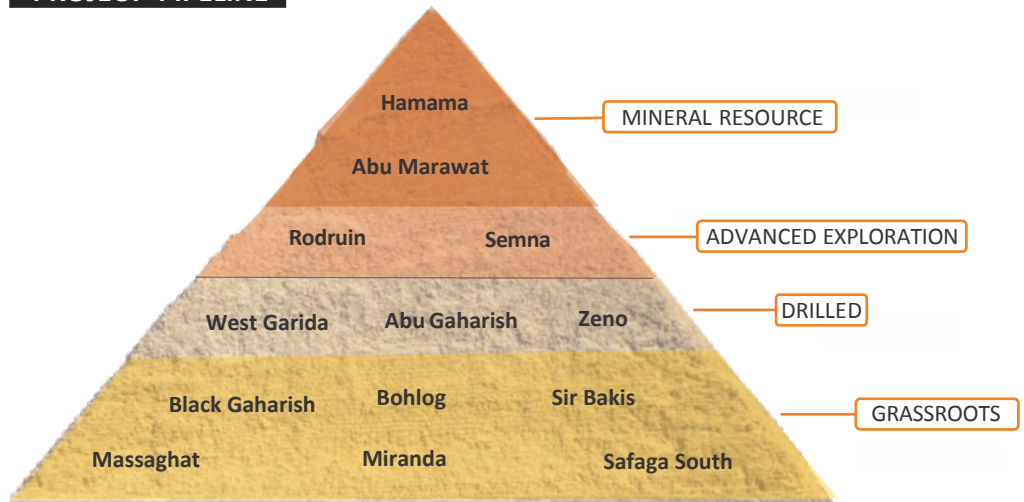
During 2023, a regional RC drilling programme resulted in the discovery of high grade orogenic gold mineralisation at the Semna gold mine, which was mined by 2 British companies during the early 20<sup>th</sup> century. Exploration at Semna will be fast-tracked, along with further development of the Abu Marawat and Rodruin deposits. RC and diamond drilling programmes at prospective regional targets including Sir Bakis, Bohlog, Zeno and Abu Gaharish are being developed

Having operated in Egypt since 2007, Aton is well established in-country, with highly qualified local Egyptian management and technical expertise. The Concession is located close to infrastructure, including major highways, a port, and two international airports, and has access to power and water



**PROJECT PIPELINE**

BOARD OF DIRECTORS	
Chief Executive Officer	<b>Tonno Vahk</b>
Director	<b>Assem Soliman</b>
Director	<b>Anthony Clements</b>
ADVISORS	
	<b>Bill Koutsouras</b> CA, CFA
	<b>David Laing</b>
	<b>Ahmed El Mehelmy</b>



Class	Deposit	Tonnes (Mt)	Grade				Contained Metal				
			Au g/t	Ag g/t	Cu %	Zn %	Au koz	Ag koz	AuEq koz	Cu mlbs	Zn mlbs
Inferred	Abu Marawat	2.88	1.75	29.30	0.77	1.15	162	2,713	-	49	73
	Hamama West	8.21	0.87	29.88	-	-	229	7,837	341	-	-
Indicated	Hamama West	3.80	0.72	27.60	-	-	88	3,376	137	-	-
Total		14.89	1.00	29.09	0.77	1.15	479	13,926	478	49	73



District-scale potential in the world’s last gold mining frontier

[www.atonresources.com](http://www.atonresources.com)

## HAMAMA WEST

The Hamama gold-silver-polymetallic deposit is located on the western margin of the Concession, and is hosted within a stratiform silica-carbonate horizon, with mineralisation occurring over a strike length of 3km

Aton has drilled 109 diamond drill holes at Hamama for a total of 11,827m and has established an inferred and indicated resource at Hamama West. The Company has developed plans for a starter open pit mine and heap leach processing operation. Groundwater has been identified about 20km west of the project

Aton is working to develop Hamama West as Egypt's second internationally operated gold mine and expects to start production during 2026 and become a cashflow positive company

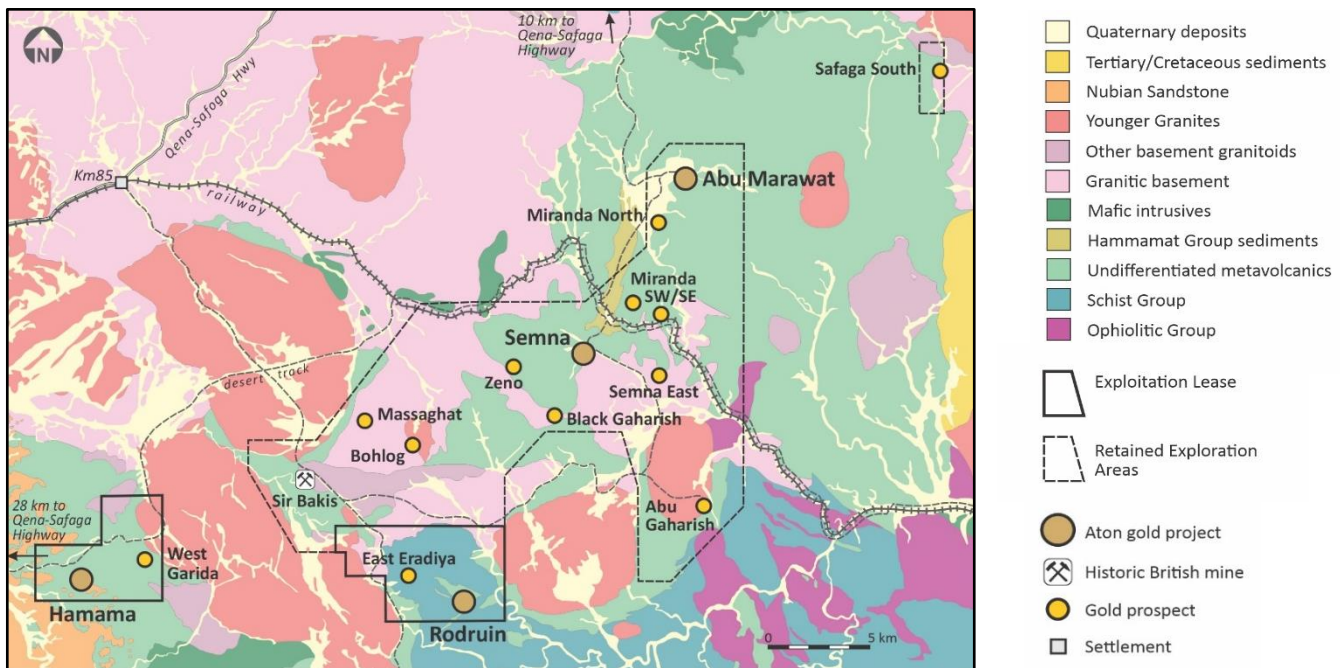
## SEMNA

During the Company's 2023 regional RC programme multiple high grade drill intercepts were returned from the Semna gold mine prospect, including:

- SMP-016: 6m @ 50.07 g/t Au, from 75m
- SMP-018: 16m @ 11.98 g/t Au, from 61m
- SMP-003: 4m @ 28.36 g/t Au, from 136m
- SMP-019: 9m @ 10.61 g/t Au, from 130m

Preliminary scoping metallurgical testwork undertaken by Wardell Armstrong International indicated abundant gravity recoverable gold and leach recoveries in excess of 97%

A follow-up diamond drilling programme will commence at Semna in February 2024. Drilling and metallurgical test work will be completed with the aim of establishing a maiden mineral resource estimate by 2025



## CONTACT

### Aton Resources Inc.

Suite 1700  
666 Burrard Street  
Vancouver, BC, V6C 2V6  
Canada

LinkedIn: [/aton-resources-inc.](#)

E: [info@atonresources.com](mailto:info@atonresources.com)

## REGIONAL

Aton has retained a further 255 km<sup>2</sup> of highly prospective ground for additional exploration for up to 4 years. There are multiple orogenic style targets proximal to Semna, Rodruin and Hamama which could become satellite deposits for a central CIL processing plant. Projects including Zeno, Bohlog and Abu Gaharish are all within 10 km<sup>2</sup> of either Rodruin or Semna. The Company is currently developing an aggressive exploration programme for the retained exploration areas with extensive diamond and RC drilling planned at the most promising targets including Sir Bakis, Bohlog and Abu Marawat

Aton has completed 43-101 compliant mineral resource estimates at the Hamama West and Abu Marawat deposits and plan to bring other prospects into the Exploration Lease during the coming exploration period

District-scale potential in the world's last gold mining frontier  
[www.atonresources.com](http://www.atonresources.com)